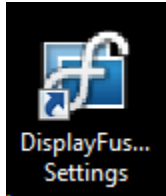


Setup and Execution of multiple monitor displays

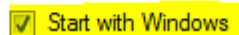
Section 1: ADMIN SETUP INSTRUCTIONS

(End users, see steps in section 3)

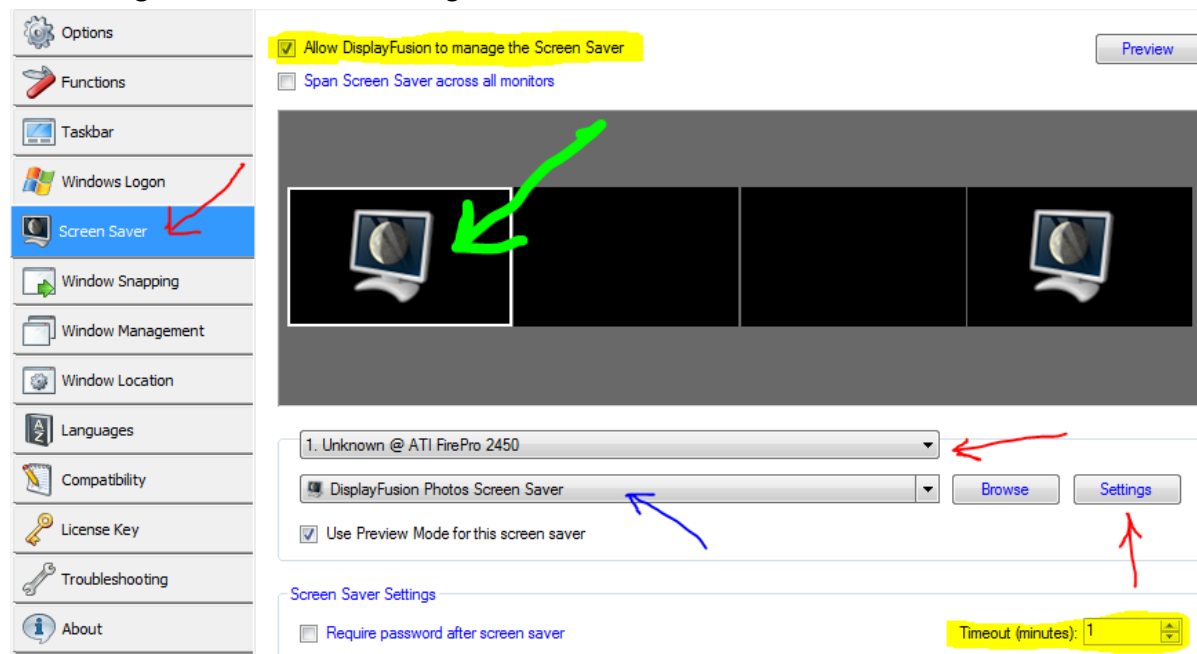
- Install Display Fusion on the PC running the multiple monitors. (Input License Key)



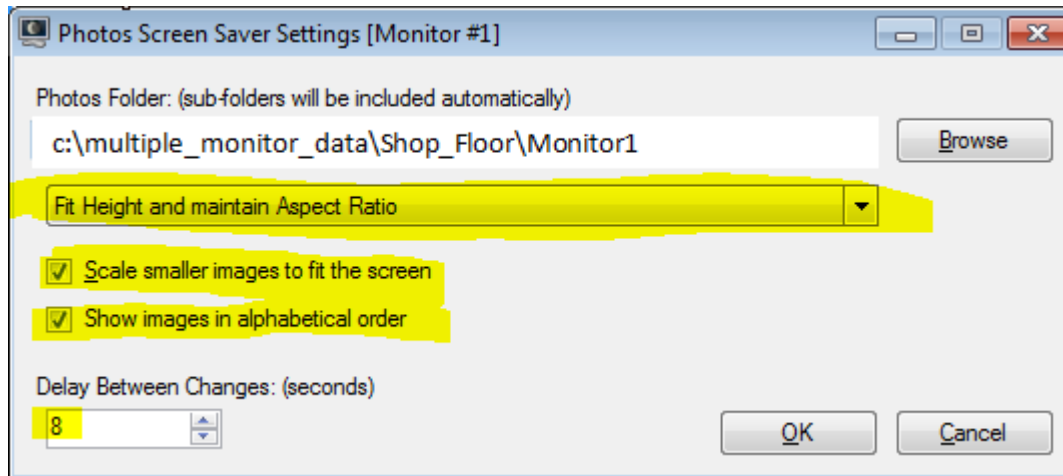
- Open Display Fusion's settings



- Click On Screen Saver tab
- Change Timeout to 1 minute
- Check "Allow Display Fusion to Manage..."
- Click on Monitor 1
- Select "DisplayFusion Photos Screen Saver"
- Click Settings button located to the right



- Update **Photos Folder** location to appropriate file location
c:\multiple_monitor_data\Shop_Floor\Monitor1
- Adjust settings as highlighted



- Repeat section 1 for remaining monitors (Each PC gets its own folder, Each monitor gets a Subfolder)
- Click OK

Section 2 MACROS

POWERPOINT

- For new files Hit Alt + F11 to bring up the Macro editor
- Copy the text below and manipulate as needed.
- Save File

```
Sub Save_PowerPoint_Slide_as_Images()  
Dim filePath As String  
Dim sImagePath As String  
Dim sImageName As String  
Dim oSlide As Slide '* Slide Object  
Dim lScaleWidth As Long '* Scale Width  
Dim lScaleHeight As Long '* Scale Height  
On Error GoTo Err_ImageSave
```

```
' alter image path as needed
```

```
filePath = "c:\multiple_monitor_data\Shop_Floor\Monitor1\Slides\*.*)"
```

```
Kill filePath
```

```
' This is to remove any extra jpgs incase the number of slides decrease
```

```
sImagePath = " c:\multiple_monitor_data\Shop_Floor\Monitor1\Slides\"
```

```
' If you want the same slide(s) to display on multiple monitors, you will need to make a new PPT file for
```

```
' for each slide (or group of slides) you wish to duplicate across the monitors and duplicate the path
```

```
' ie
```

```
' sImagePath = " c:\multiple_monitor_data\Shop_Floor\Monitor1\Slides\"
```

```
' sImagePath = " c:\multiple_monitor_data\Shop_Floor\Monitor2\Slides\"
```

```
For Each oSlide In ActivePresentation.Slides
```

```
sImageName = oSlide.Name & ".jpg"
```

```
oSlide.Export sImagePath & sImageName, "JPG"
```

```
Next oSlide
```

```
Err_ImageSave:
```

```
If Err <> 0 Then
```

```
MsgBox Err.Description
```

```
End If
```

```
End Sub
```

Section 2 (continued)

EXCEL

- For new files Create a **data** Tab and add a chart on each tab needed
- Hit Alt + F11 to bring up the Macro editor
- Copy the text below and manipulate as needed.
- Save File

```
Sub ExportAllAspng()
```

```
' Saves the active chart as a png file
```

```
' Prompts for a file name and directory
```

```
' Alter image path as needed
```

```
Sheets("Metal").Select
```

```
ActiveChart.Activate
```

```
ActiveChart.Export "c:\multiple_monitor_data\Shop_Floor\Monitor1\Graphs\Metal.png", "png"
```

```
' Repeat for each sheet in the excel file and update the file name and path as needed.
```

```
' If you want the same graph to display on multiple monitors, copy the text above with a new path
```

```
' ie
```

```
' ActiveChart.Export "c:\multiple_monitor_data\Shop_Floor\Monitor1\Graphs\Metal.png", "png"
```

```
' ActiveChart.Export "c:\multiple_monitor_data\Shop_Floor\Monitor2\Graphs\Metal.png", "png"
```

```
Sheets("data").Select
```

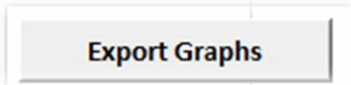
```
End Sub
```

Section 3: HOW TO UPDATE EXCEL AND POWERPOINTS

(Macro Settings listed in Section 2)

EXCEL

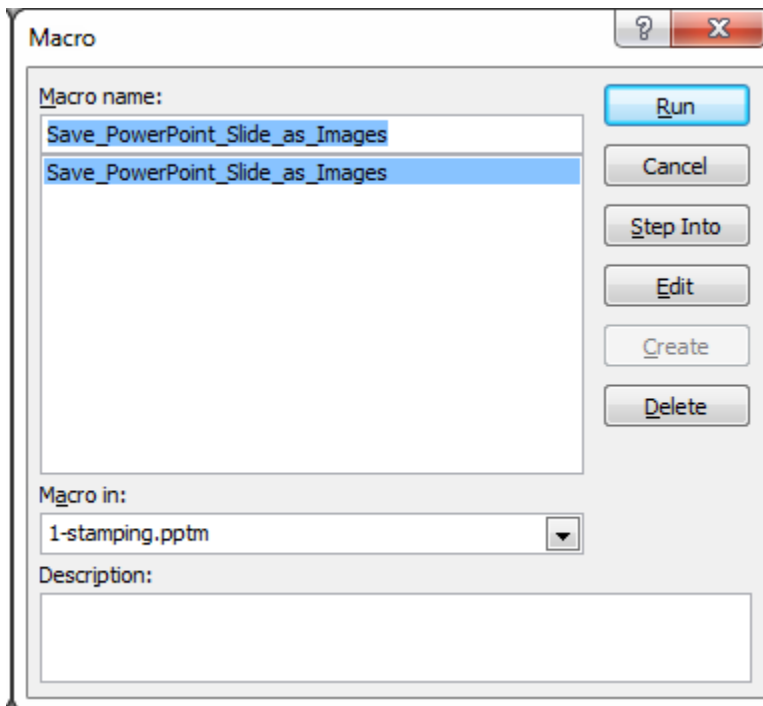
- Navigate to the appropriate folder (ie: c:\multiple_monitor_data\ Source_Files\Shop_Floor)
- Open Folder of PC being updated (ie: Shop_Floor)
- Open Excel File found in Folder
- Select Data tab (if not already selected)
- Manipulate data as required
- Run Macro by click the Export Graph Tab



- Save Excel File and close

POWERPOINT

- Open Power Point File found in appropriate folder (ie: c:\multiple_monitor_data\ Source_Files\Shop_Floor)
- Update existing slides (add or remove as needed)
- Press the Alt button plus the F8 button (**Alt + F8**)
- Run the Macro

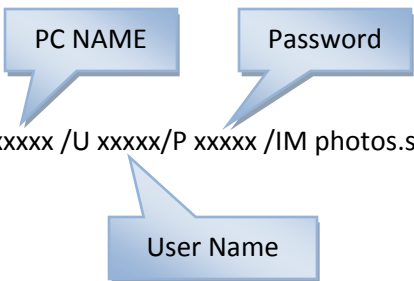


- Save the PowerPoint file and Exit.

Note, If the number of slides increase/decrease or for any reason the file name changes, Run "double_click_to_update.bat" and the screen saver will restart in 1 minute.

Batch File Code to Restart Screen Saver (local user name below must have admin rights on the PC)

```
@echo off
taskkill.exe /S %PC NAME% /U %User Name%/P %Password% /IM photos.scr
exit
```



Batch File Code to Download Weather Maps (or other images) from Internet

REM If for some reason a few of these images stop working you will need to find a website that only updates the same image and file name and copy in the method as seen below.

REM Setup a scheduled task to run the batch file below on a regular schedule

REM You will need to copy wget.exe to the c:\windows directory running the task.

```
wget -r http://media3.wishtv.com/weather/dce/Regional_SAT_RAD.jpg
```

```
copy /y
```

```
c:\multiple_monitor_data\media3.wishtv.com\weather\dce\Regional_SAT_RAD.jpg
```

```
c:\multiple_monitor_data\Main_Hall\Monitor1\Midwest_Radar.jpg
```

REM Removes Temporary Director

```
rmdir c:\multiple_monitor_data\media3.wishtv.com" /S /Q
```

Notes:

The paths in the codes above can all be redirected to a server path. Ie: replace C:\ with [\\servername](#) or map a drive to a server to maintain long lasting compatibility.

Link to **WGET.EXE**

http://downloader.brothersoft.com/d.php?soft_id=5755&downloader=&url=http%3A%2F%2Fpages.interlog.com%2F%2F7etcharron%2Fwgetwin-1_5_3_1-binary.zip

http://pages.interlog.com/~tcharron/wgetwin-1_5_3_1-binary.zip

You can use the Snipping tool found on Windows 7 to copy images from PDF's, Publisher Files, Etc as a quick and dirty way to add information to a monitor. Save the file in appropriate the PC / Monitor # folder.

See "Change the resolution of a slide that you export as a picture in PowerPoint.docx" to increase the resolution of the export from PowerPoint.