

Automatically Save and Restore Window Positions on Dock/Undock



DISPLAYFUSION



BINARYFORTRESS

Automatically Saving and Restoring Window Positions on Dock/Undock

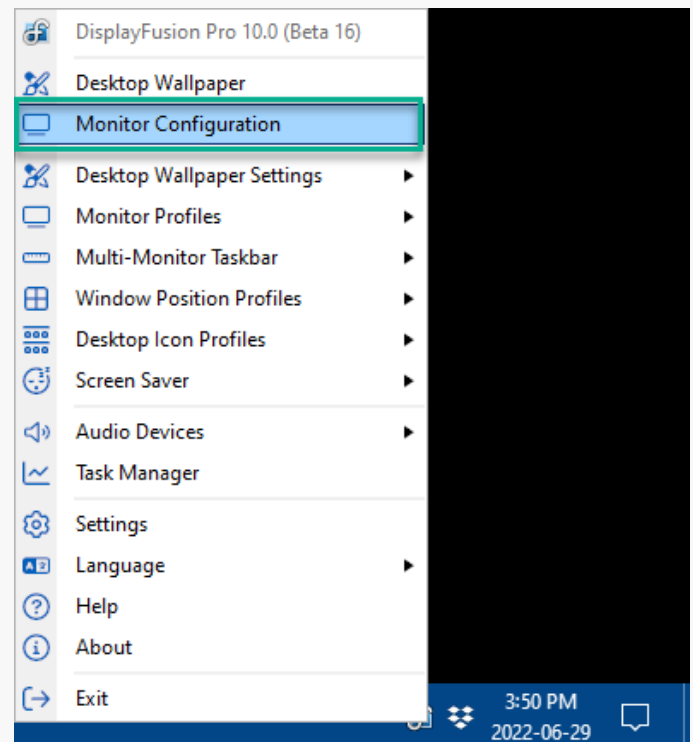
When undocking and re-docking a laptop to external monitors, Windows moves all open applications to the laptop monitor. When re-docking, the applications don't automatically move back to the external monitor(s)

You can solve this issue by automatically saving and restoring the window positions using DisplayFusion's "Triggers" feature. The steps below describe how to achieve this:

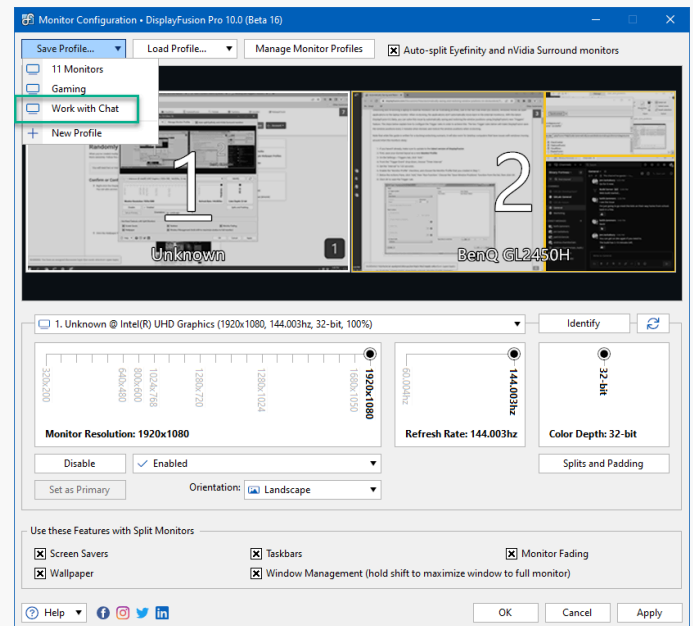
Note: While this guide is written for a docking/undocking scenario, it will also work for desktop computers that have issues with windows moving around when the monitors sleep. For another approach, see this guide: [Automatically Save and Restore Window Positions on Sleep/Resume](#)

First, you'll want to save your current docked arrangement as a Monitor Profile. If you have yet to create a Monitor Profile, you can do so from the same location within DisplayFusion.

- Right-click the DisplayFusion tray icon and click "Monitor Configuration."



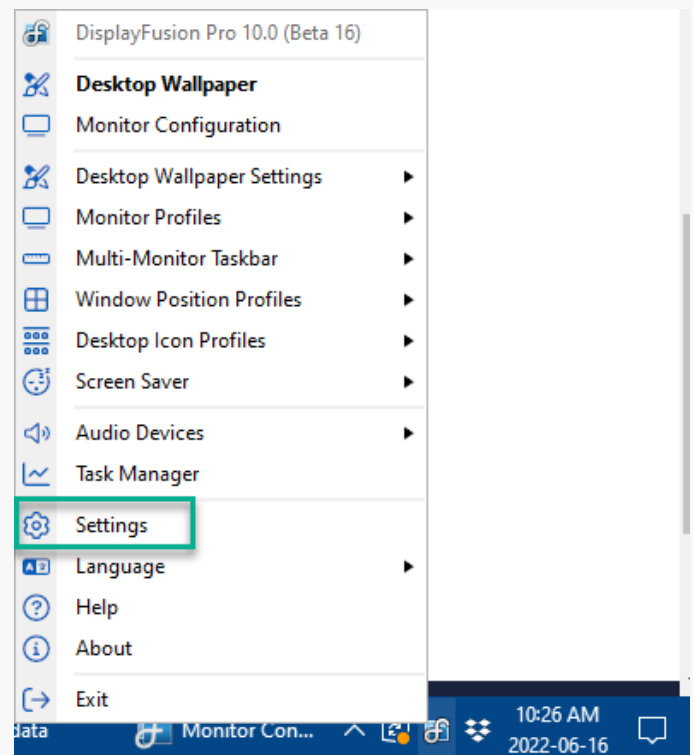
- Configure your monitors as desired and save the profile.



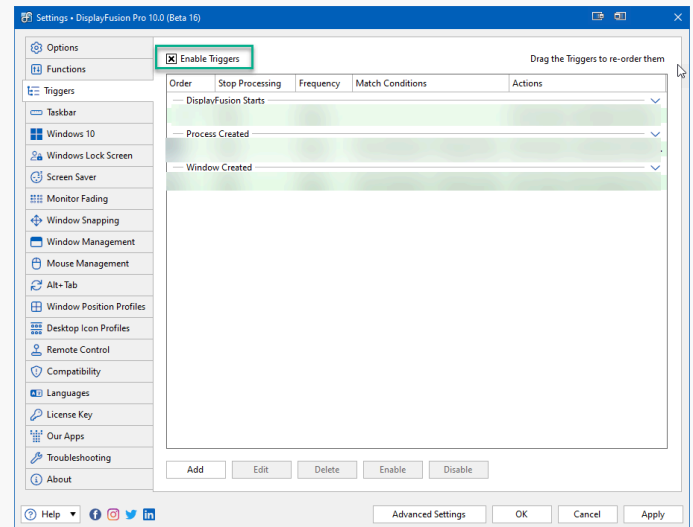
- Click "OK"

Once you have a docking profile, continue.

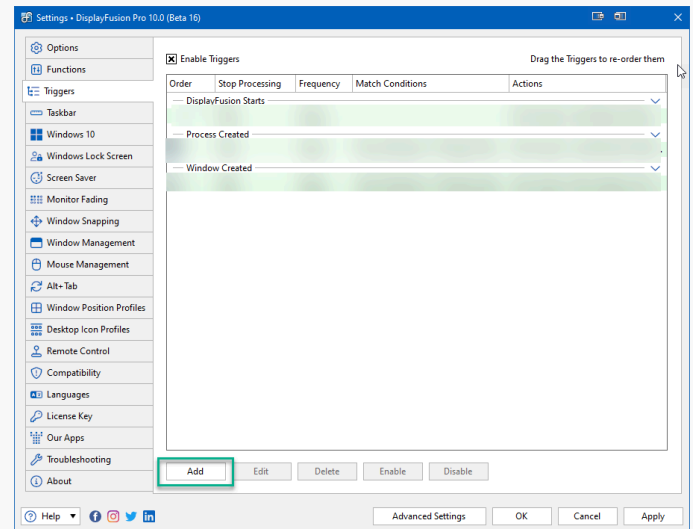
- Right-click the DisplayFusion icon and click "Settings."



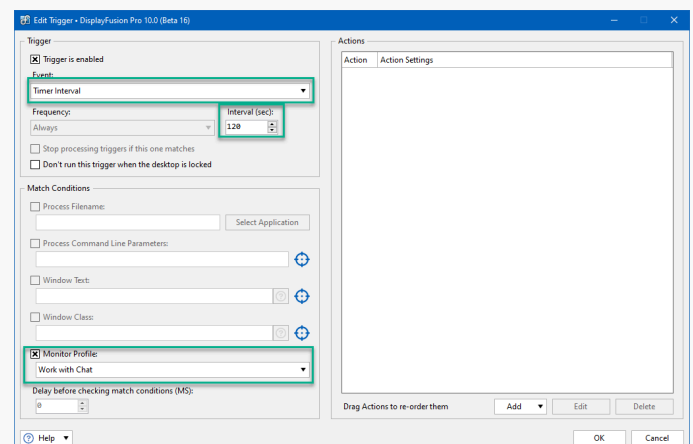
- Select the "Triggers" tab, then enable the "Enable Triggers" checkbox.



- Click the "Add" button.

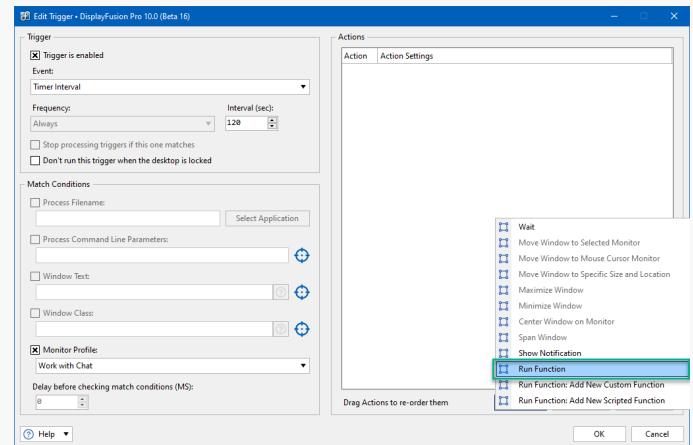


- Click the "Event" dropdown and select "Timer Interval."

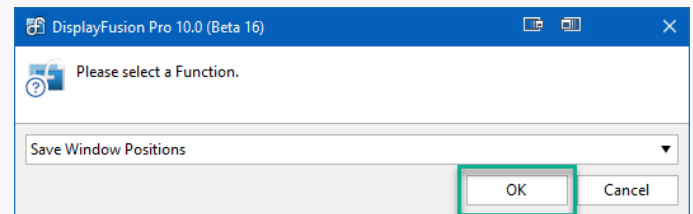


- In the "Idle Timeout (sec)" field, type 120.
- Enable the "Monitor Profile" checkbox, and select your docking profile.

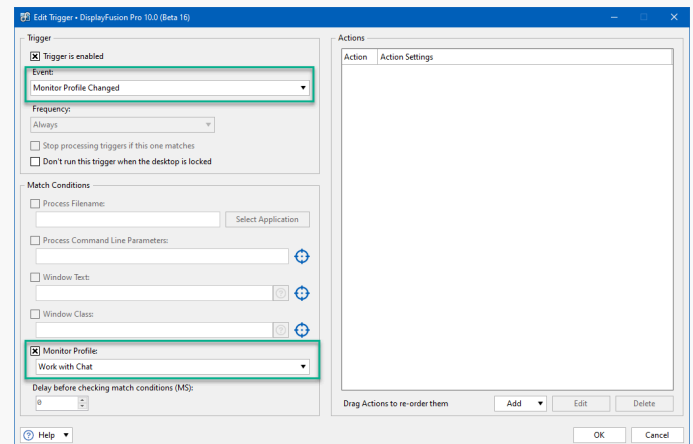
- In the "Actions" area, click "Add" and select "Run Function."



- In the pop-up, select "Save Window Positions" and click "OK."

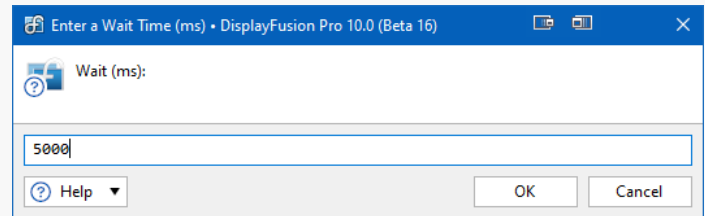
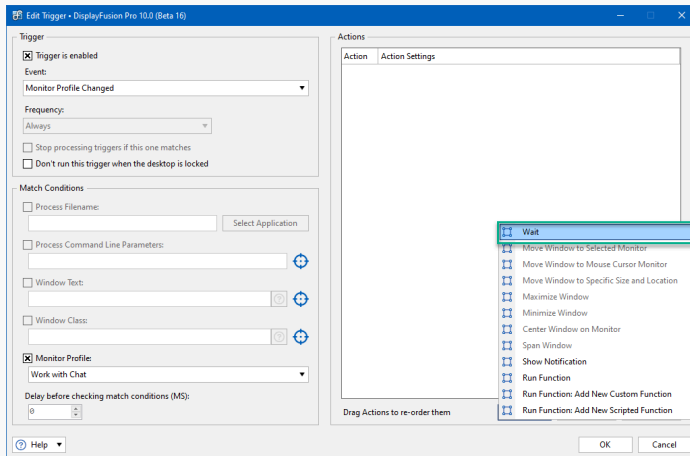


- Click "OK" to save the Trigger rule.
- Click the "Add" button again.
- For the "Event" dropdown, select "Monitor Profile Changed."

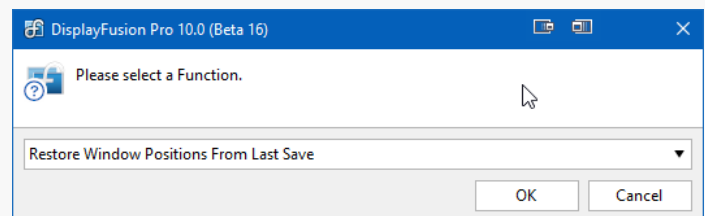
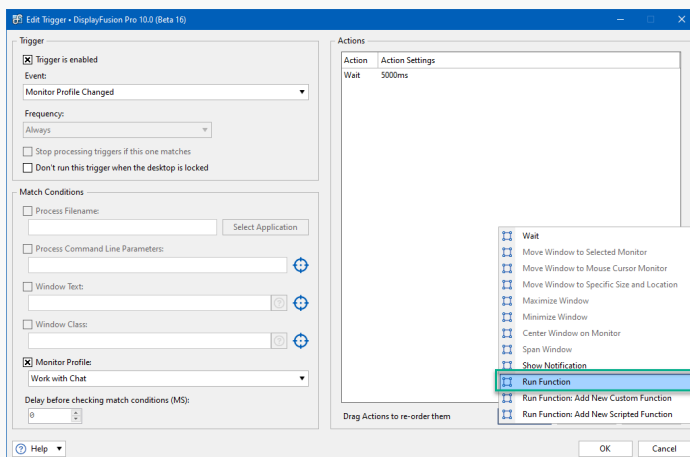


- Enable the "Monitor Profile" checkbox, and select your docking profile.

- Click "Add," then click "Wait," entering "5000" in the text field. Click "OK." If the 5000 ms wait is working well, you can try reducing that to speed up the restore time.

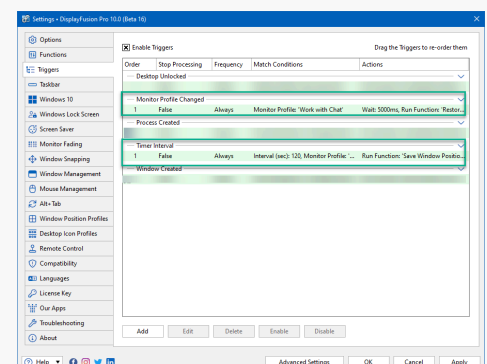


- Click "Add" again, this time clicking "Run Function" and selecting "Restore Window Positions From Last Save." Click "OK."



- Click "OK" to save the Trigger rule.

You'll see your newly-added Triggers with a green background, indicating they are enabled.



About DisplayFusion

DisplayFusion gives users power and precision over their multi-monitor setup, with automation and customization options to create the perfect displays, every time.

To learn more about DisplayFusion, visit: <https://www.displayfusion.com>

About Binary Fortress Software

Binary Fortress has spent 17 years in pursuit of one goal: create software to make life easier. Our software ranges from display management and system enhancement utilities to monitoring tools and digital signage. IT administrators, professional gamers, coffee-shop owners, and MSPs all rely on Binary Fortress to make their days better, and their lives easier.

Copyright © 2007-2024 Binary Fortress Software, all rights reserved.

The Binary Fortress logo is a trademark of Binary Fortress Software.

The DisplayFusion logo is a trademark of Binary Fortress Software.

Binary Fortress Software
1000 Innovation Drive, Suite 500
Kanata, Ontario, Canada
K2K3E7
<https://www.binaryfortress.com>