

Custom Functions

 **DISPLAYFUSION**

 **BINARYFORTRESS**

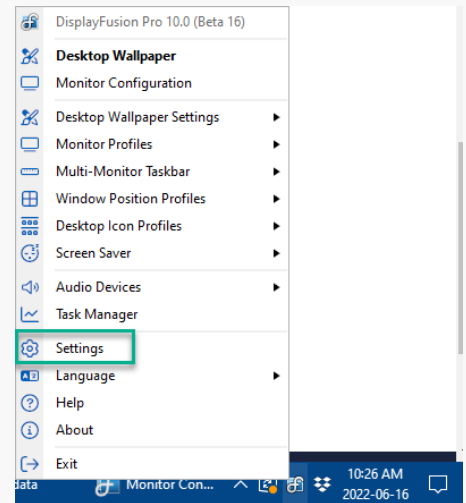
Custom Functions

DisplayFusion has many built-in Functions for moving, sizing, or otherwise manipulating program windows. If you have a particular need that can't be fulfilled by the built-in Functions, you can also create custom Functions.

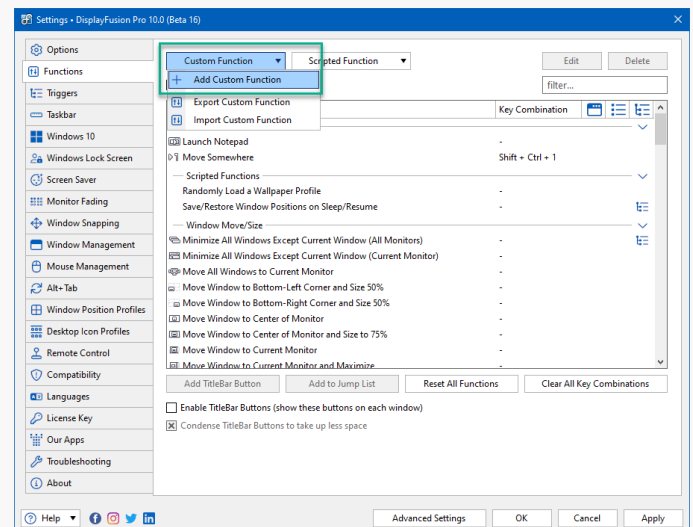
Create a Custom Function

The basic steps for creating a custom Function are as follows:

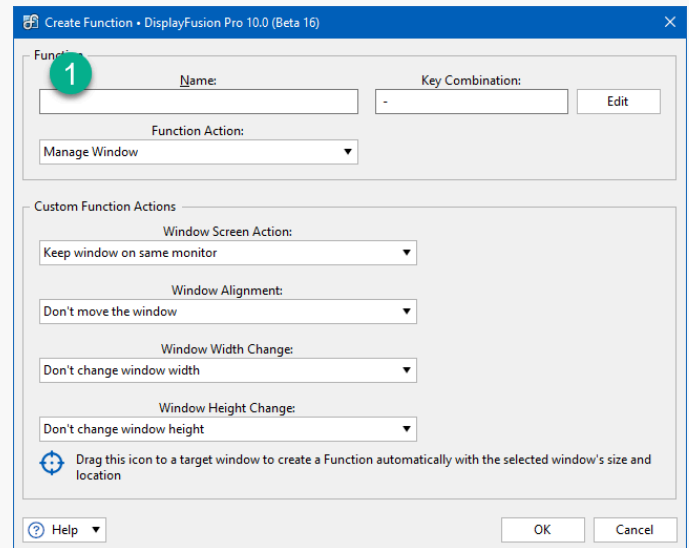
- Right-click the DisplayFusion tray icon and click "Settings."



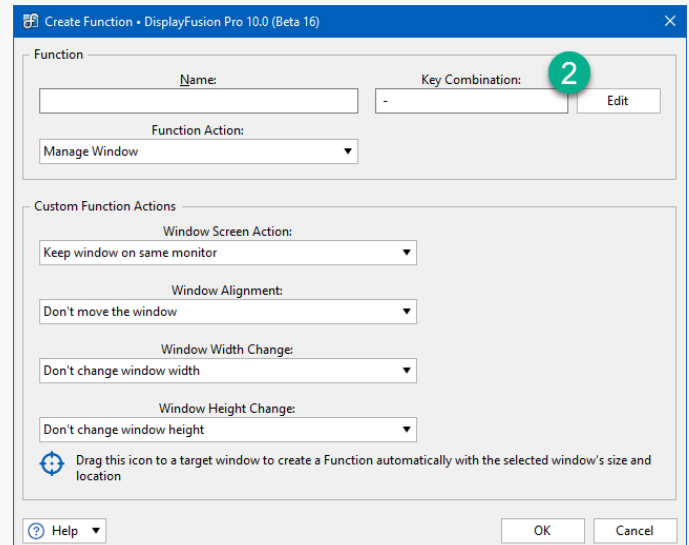
- Select the "Functions" tab, click the "Custom Function" dropdown and select the "Add Custom Function" option.



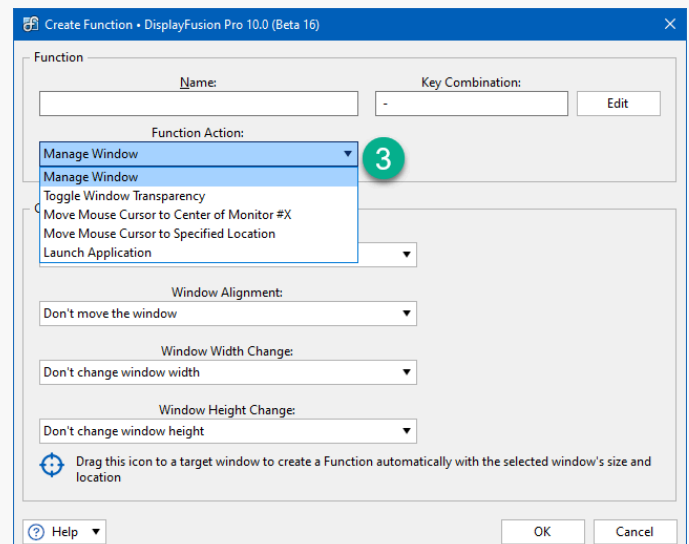
1. Name your Function.



2. Click "Edit" to assign a Hotkey (optional)



3. Select the Function Action



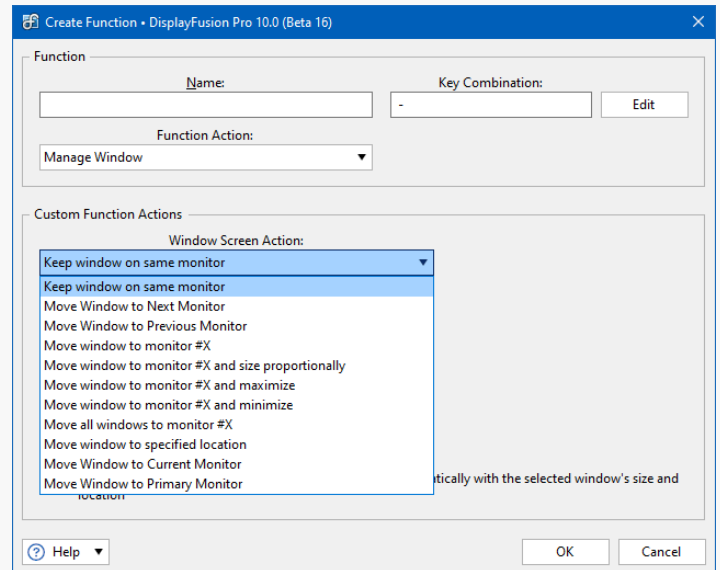
Custom Function Actions

Each Function Action option has its own additional configuration options. Selecting the Function Action from the dropdown alters the Create Function window as shown below.

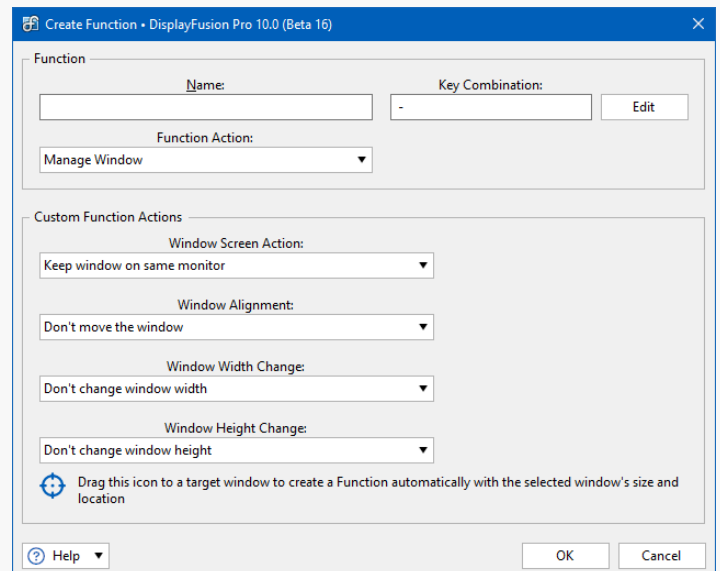
Manage Window

"Manage Window" options are for moving and resizing the selected window.

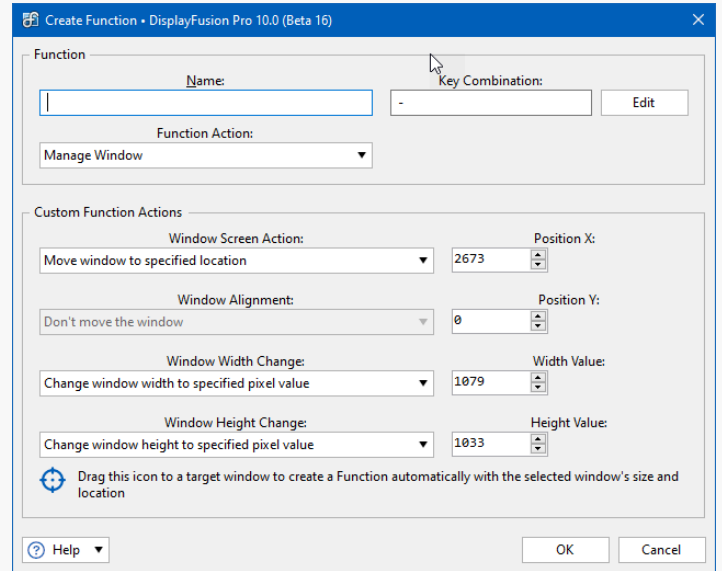
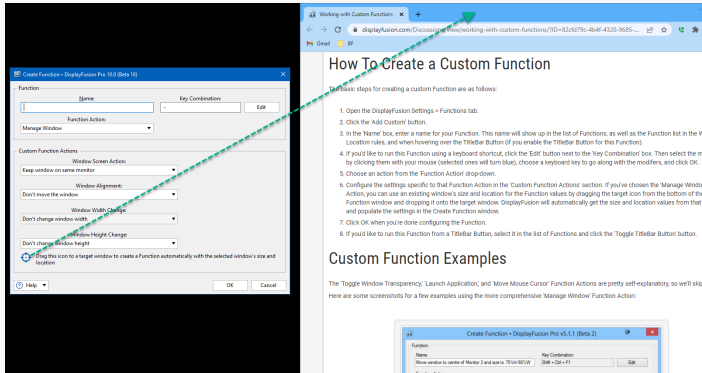
The "Window Screen Action" dropdown addresses the larger movement and sizing options, such as moving the window to a specified monitor and altering its size.



The other dropdowns allow for more detailed window alignment and sizing configurations.

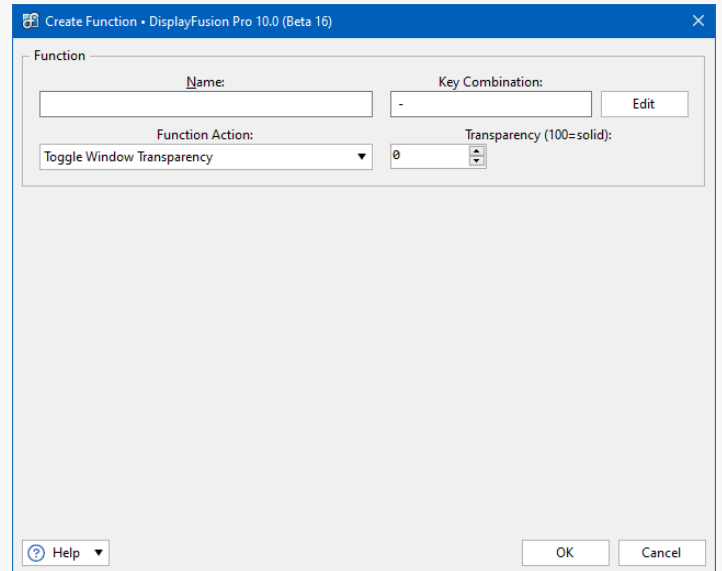


For exact positioning, drag the blue target icon onto the window at its current and desired location. You'll see the X, Y, Width and Height values automatically populate.



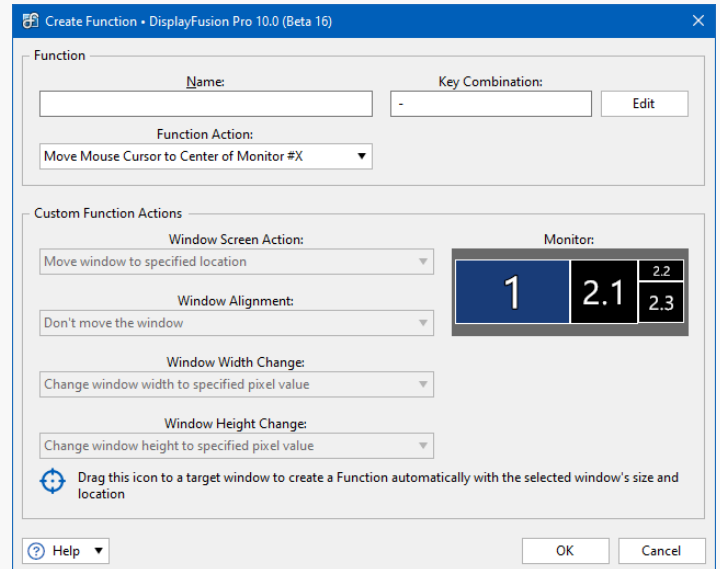
Toggle Window Transparency

This option will alter the transparency of the window using increments from 0 to 100.



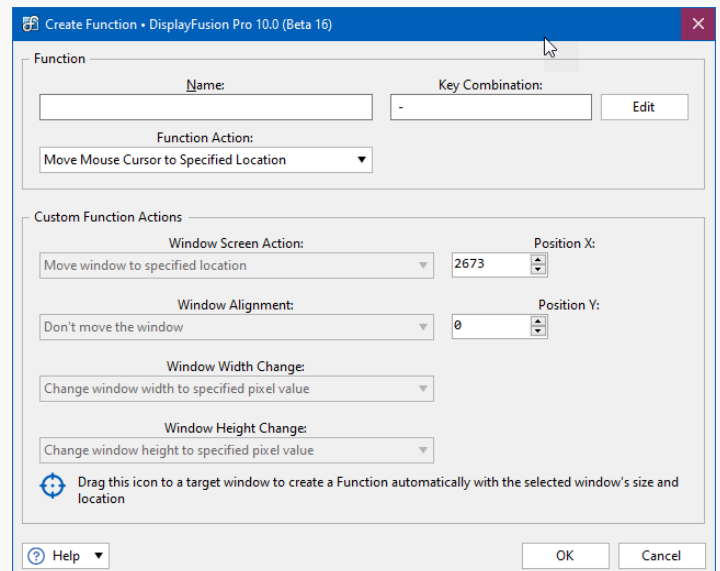
Move Mouse Cursor to Center of Monitor #X

This option moves the mouse cursor to the centre of a monitor of your choosing. Select the monitor or split from the Monitor preview.



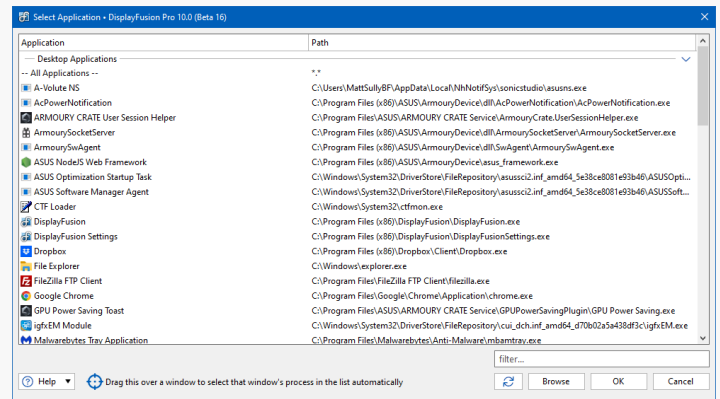
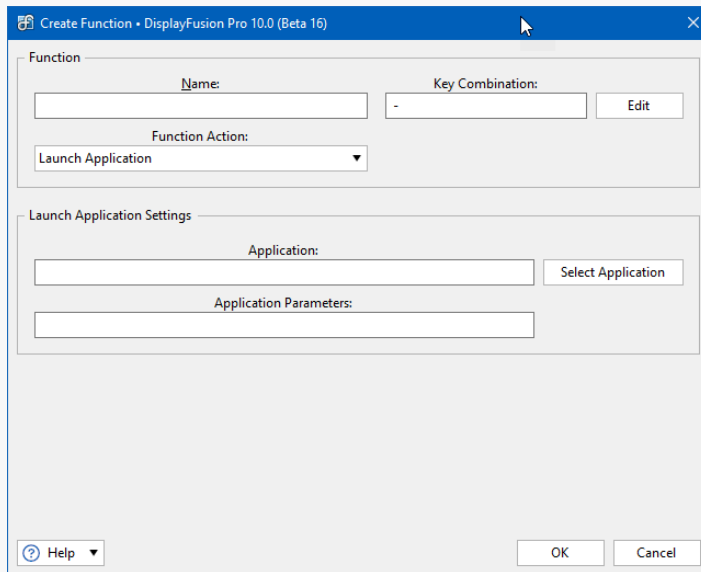
Move Mouse Cursor to Specified Location

This option moves the cursor to an exact location, specified by X and Y values.

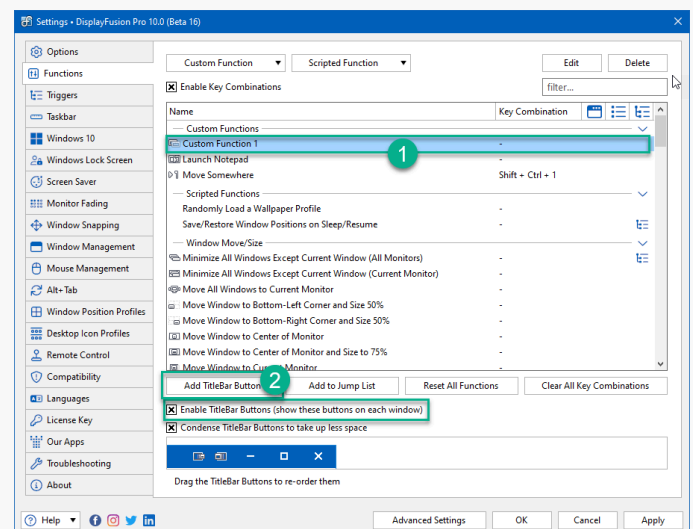


Launch Application

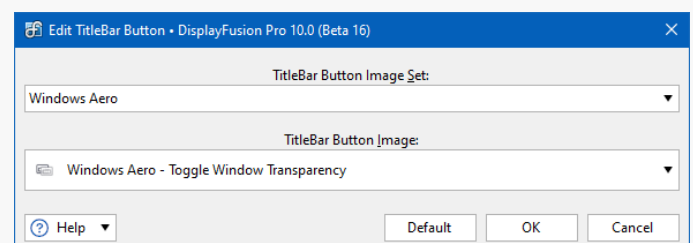
This option lets you specify an application to launch. Click the "Select Application" button to choose from a list. You can also "Browse" for the file or drag the blue target over an open window to select its process file / executable file.



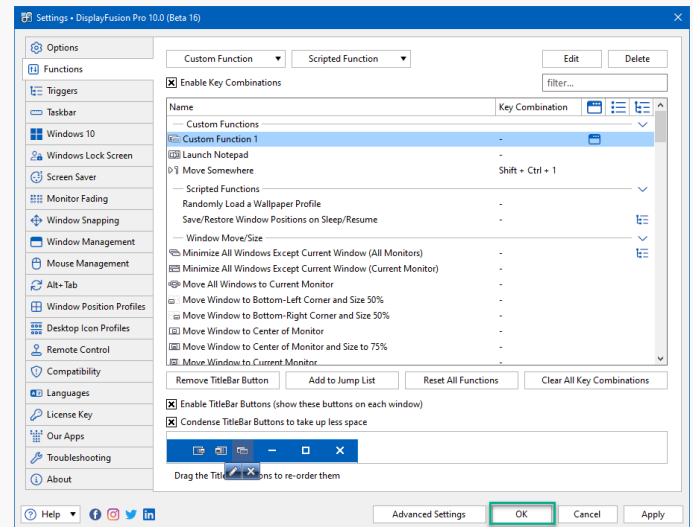
- When finished configuring your Custom Function, click "OK."
- To add your Custom Function to windows as a TitleBar Button, select the Function from the list and click "Add TitleBar Button." **The "Enable TitleBar Buttons" checkbox must be enabled.**



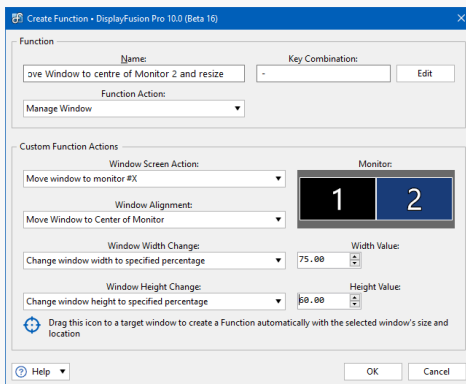
- Select the button style by choosing the Image Set and Image from the dropdowns, then click "OK."



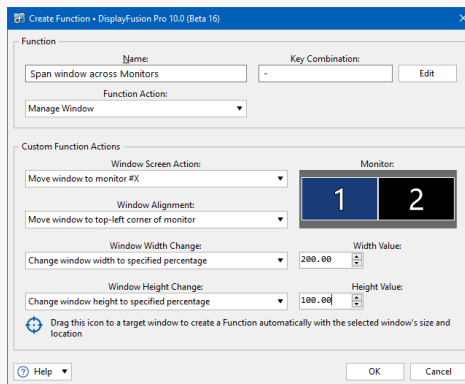
- To apply and save your Custom Function changes, click "OK."



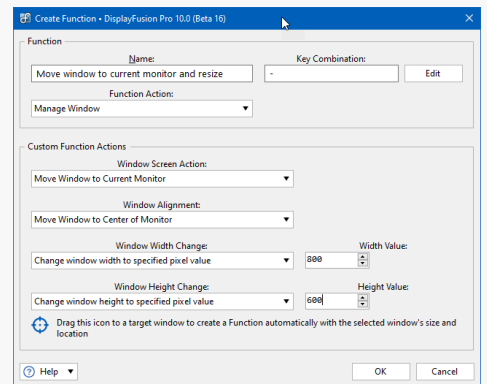
Examples



Move the window to the centre of monitor 2 and size to 75% width and 60% height



Span the window across only 2 monitors in a 3 monitor setup



Move window to current monitor and size to 800px width and 600px height

About DisplayFusion

DisplayFusion gives users power and precision over their multi-monitor setup, with automation and customization options to create the perfect displays, every time.

To learn more about DisplayFusion, visit: <https://www.displayfusion.com>

About Binary Fortress Software

Binary Fortress has spent 17 years in pursuit of one goal: create software to make life easier. Our software ranges from display management and system enhancement utilities to monitoring tools and digital signage. IT administrators, professional gamers, coffee-shop owners, and MSPs all rely on Binary Fortress to make their days better, and their lives easier.

Copyright © 2007-2024 Binary Fortress Software, all rights reserved.
The Binary Fortress logo is a trademark of Binary Fortress Software.
The DisplayFusion logo is a trademark of Binary Fortress Software.

Binary Fortress Software
1000 Innovation Drive, Suite 500
Kanata, Ontario, Canada
K2K3E7
<https://www.binaryfortress.com>