

DisplayFusion Taskbar Customization



DISPLAYFUSION



BINARYFORTRESS

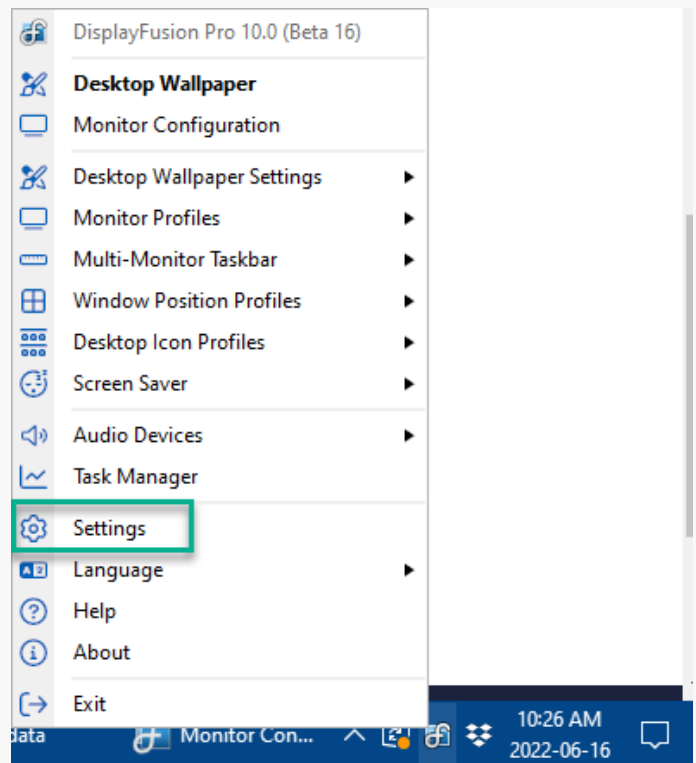
DisplayFusion Taskbar Customization

By default, the DisplayFusion taskbar will match the behaviour of the Windows taskbar, but the DisplayFusion taskbar has a wealth of customization options. This document covers some of those options and where to configure them.

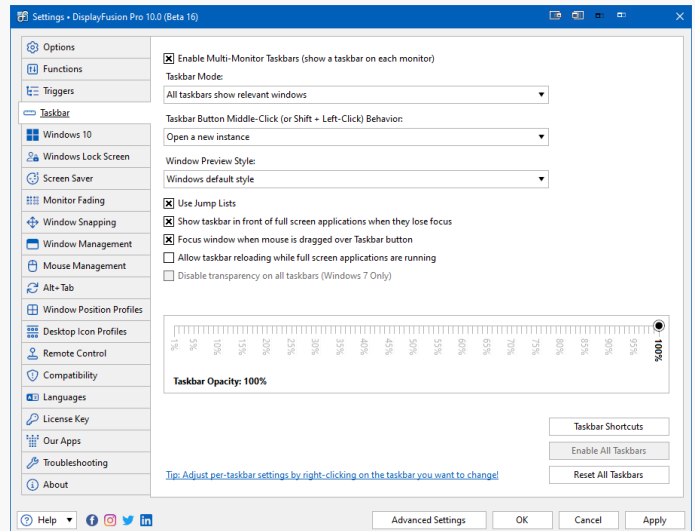
Global Taskbar Settings

Some settings affect all DisplayFusion taskbars. These global taskbar settings are in the Taskbar tab of DisplayFusion's Settings.

- Right-click the DisplayFusion icon and click "Settings."



- Click the Taskbar tab.



Taskbar Tab

This area allows you to:

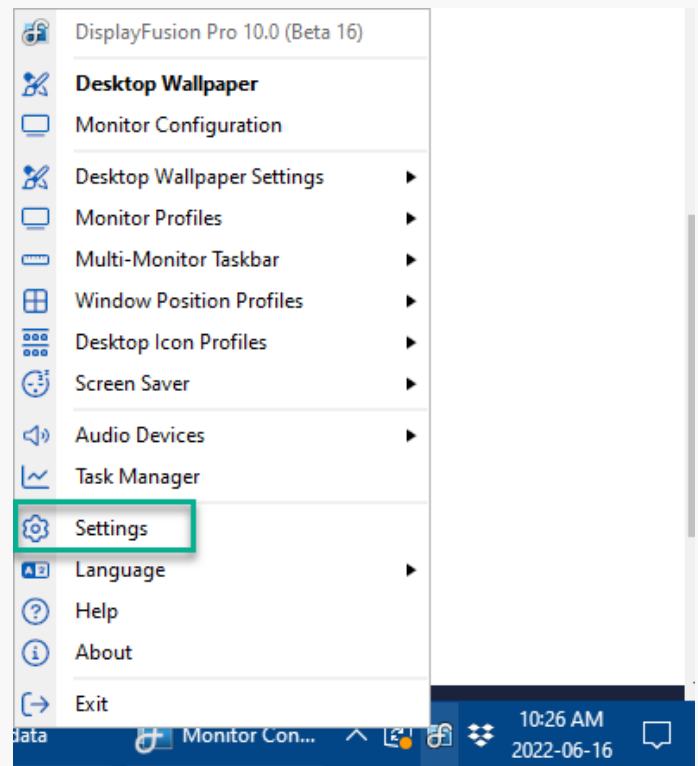
- Enable Multi-Monitor Taskbars
- Enable Jump Lists
- Enable focus, full screen, and transparency options
- Set Taskbar Modes (windows display options)
- Set the Taskbar Button Middle-Click Behaviour
- Select the Windows Preview Style
- Set Taskbar Opacity

Taskbar Shortcuts

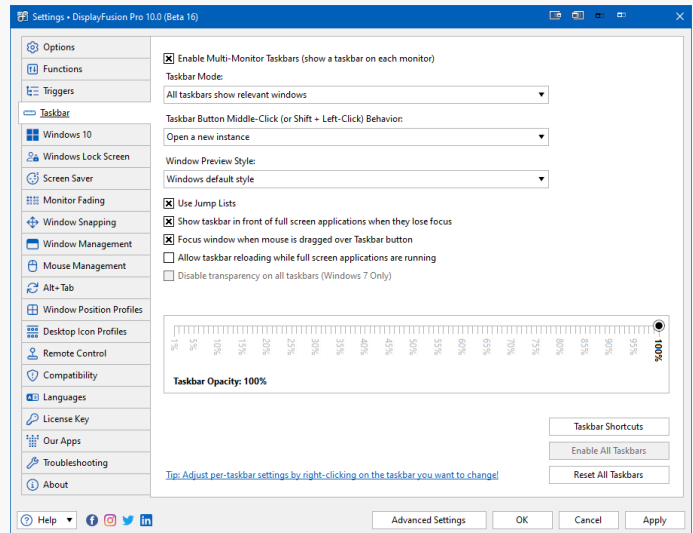
The DisplayFusion taskbar allows you to add different types of shortcuts to the taskbar. You can add regular application shortcuts, like the Windows taskbar, but you can also add shortcuts to files, folders, and websites.

Taskbar Shortcuts are in the Taskbar tab of DisplayFusion's Settings.

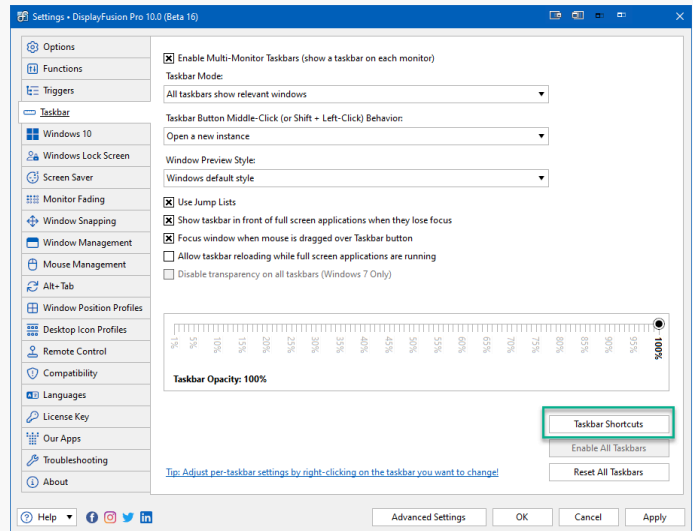
- Right-click the DisplayFusion icon and click "Settings."



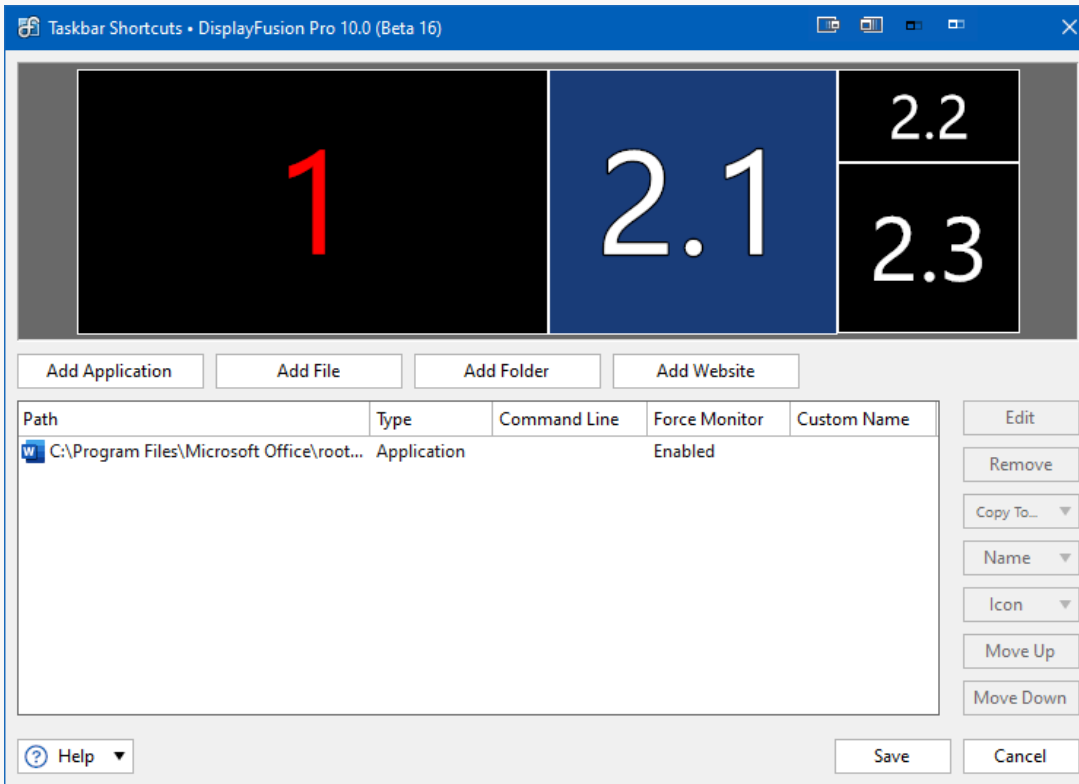
- Click the Taskbar tab.



- Click the Taskbar Shortcuts button.

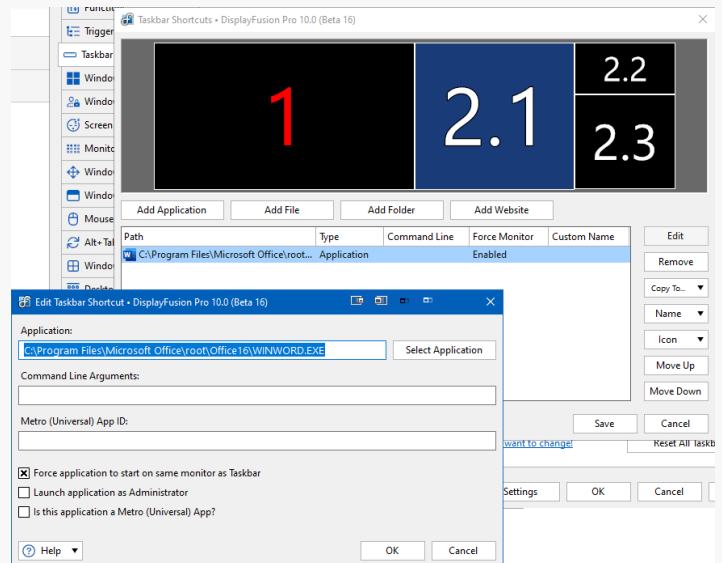


From here you can add all of the shortcut types (Application, File, Folder, Website), and also edit, rename, re-arrange, and specify custom icons for the shortcuts.

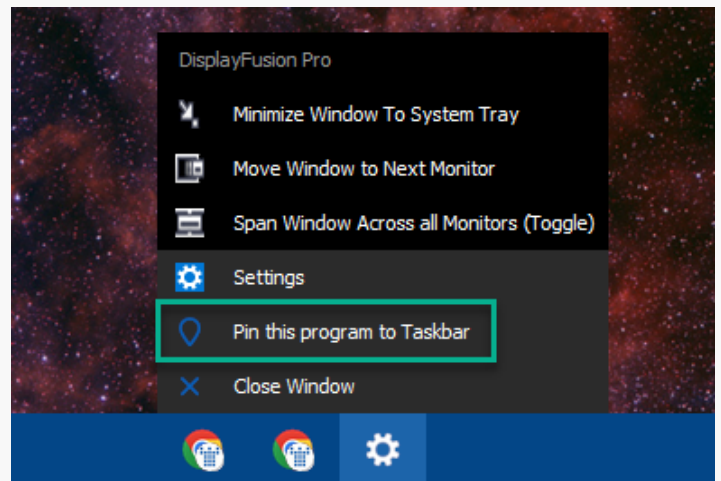


Applications, Folders, and Websites shortcuts start on the same monitor as the taskbar by default.

You can disable this action by disabling the "Force [shortcut] to open/start on same monitor as Taskbar" checkbox. On Applications you also have Administrator and Metro options as well as the ability to use Command Line Arguments.



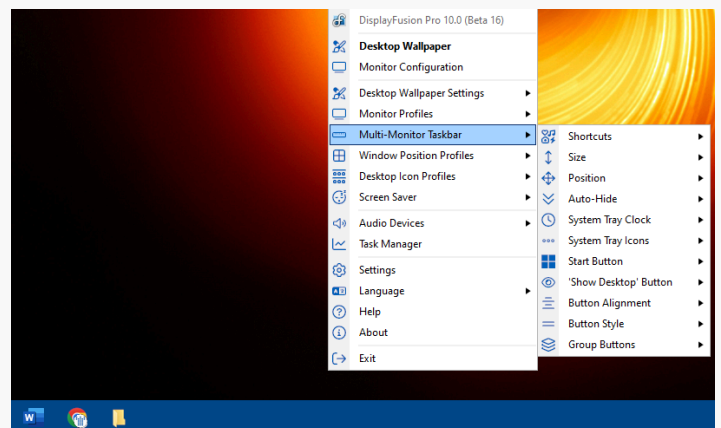
Application shortcuts can also be added by right-clicking a button on the DisplayFusion taskbar and choosing "Pin this program to Taskbar."



Individual Taskbar Settings

Each taskbar element (Start button, shortcuts, application buttons, system tray, clock, and show desktop button) can be moved to either side of the taskbar, or disabled completely.

Right-click a blank space on any DisplayFusion-controlled Taskbar and select "Multi-Monitor Taskbar" to bring up the submenu options.



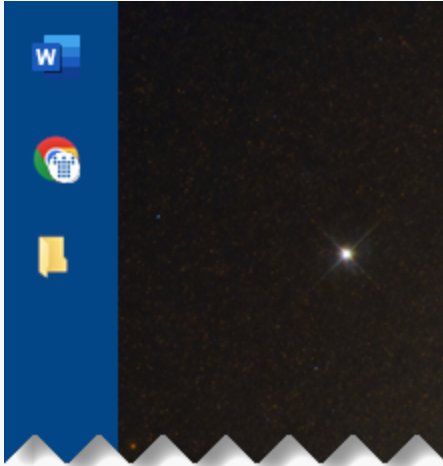
Multi-Monitor Taskbar Menu

This menu allows you to:

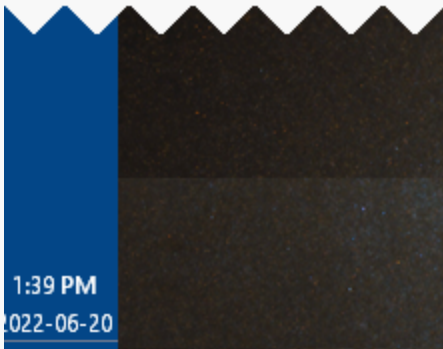
- Control the Size and Position of the taskbar
- Set the Auto-Hide option
- Set the visibility and location of the System Tray Clock, System Tray Icons, Start Button, Show Desktop Button and your Shortcuts. *There is also a link to Edit Shortcuts.*
- Choose the Alignment, Style, and Grouping of Buttons

Examples

Below are some examples of configured Taskbars.



Left Position, Disabled Start Button



Shortcuts Left, Start Button Disabled, Button Alignment Middle

About DisplayFusion

DisplayFusion gives users power and precision over their multi-monitor setup, with automation and customization options to create the perfect displays, every time.

To learn more about DisplayFusion, visit: <https://www.displayfusion.com>

About Binary Fortress Software

Binary Fortress has spent 19 years in pursuit of one goal: create software to make life easier. Our software ranges from display management and system enhancement utilities to monitoring tools and digital signage. IT administrators, professional gamers, coffee-shop owners, and MSPs all rely on Binary Fortress to make their days better, and their lives easier.

Copyright © 2007-2026 Binary Fortress Software, all rights reserved.
The Binary Fortress logo is a trademark of Binary Fortress Software.
The DisplayFusion logo is a trademark of Binary Fortress Software.

Binary Fortress Software
1000 Innovation Drive, Suite 500
Kanata, Ontario, Canada
K2K3E7
<https://www.binaryfortress.com>