

# Window Management Settings Overview



DISPLAYFUSION

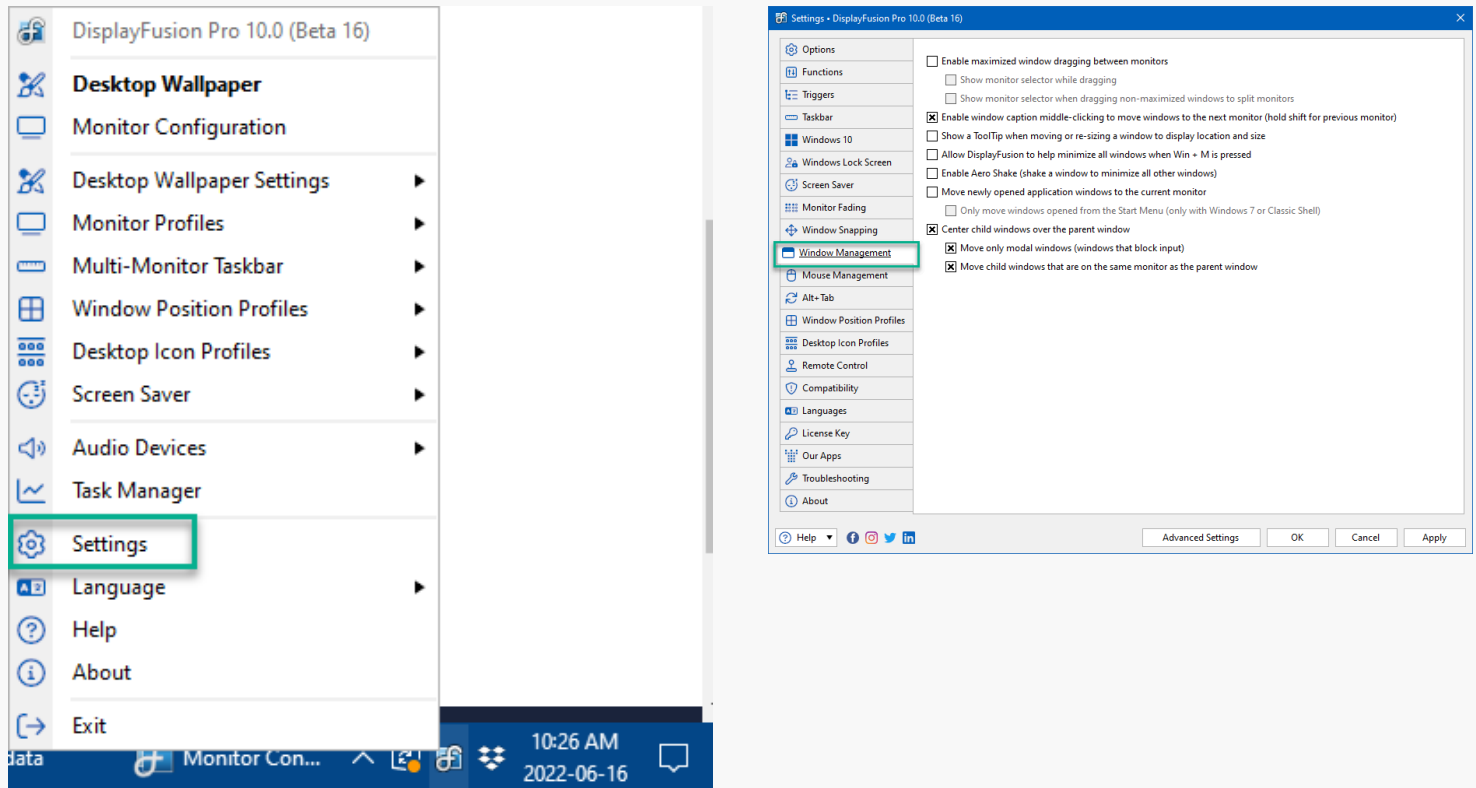


BINARYFORTRESS

# Window Management Settings Overview

The Window Management tab has configuration options for how DisplayFusion handles application windows.

To navigate here, right-click the DisplayFusion tray icon and click "Settings," then click the tab "Window Management."



Below are the configuration options:

## Enable maximized window dragging between monitors

This allows you to drag a maximized window from one monitor to another while maintaining its maximized state.

Notes: If you like to have your windows locked in place while working, we suggest you disable this. The snap settings in the Windows "Multitasking" settings will override this. Disable "Snap Windows" in the Multitasking section of Windows before disabling this checkbox.

## Show monitor selector while dragging

This setting creates a visual notification of the monitor where your window is positioned while dragging. This is especially useful when using monitor splits.

## Show monitor selector when dragging non-maximized windows to split monitors

This extension of the "Show monitor selector while dragging" option includes non-maximized windows. Holding the shift key will override this behavior.

## Enable window caption bar middle-clicking to move windows to the next monitor (Hold shift to move to previous monitor)

This allows you to mouse-wheel click a window titlebar to move it to the next monitor, a shortcut for the "Move window to next monitor" function.

## Show a ToolTip when moving or re-sizing a window to display location and size

This displays a tooltip overlay on the window currently being dragged. The tooltip will show the size (in pixels) of the window, and the pixel locations of the top left, and bottom right corners of the window. (DisplayFusion Pro Only)

## Allow DisplayFusion to help minimize all windows when Win + M is pressed

This setting allows DisplayFusion to minimize all windows across all screens when the Win + M keyboard shortcut is pressed.

## Enable Aero Shake (shake a window to minimize all other windows)

Disable this setting to prevent Windows from minimizing all windows when shaking a window with the mouse.

## Move newly opened application windows to the current monitor

This option forces the first process of a newly-opened application to move to the monitor the mouse cursor is currently on.

## Only move windows opened from the Start Menu (only with Windows 7 or Classic Shell)

This option forces only the applications launched from the Start menu to move to the monitor that the mouse cursor is currently on.

## Centre child windows over the parent window

This setting automatically moves any child dialogs or windows to the same monitor that the parent window is on.

## Move only modal windows (windows that block input)

This setting forces DisplayFusion to move only modal windows, instead of all child windows.

## Move child windows that are on the same monitor as the parent window

This setting forces the child dialog or window to be centred over the parent window when DisplayFusion moves it.

# About DisplayFusion

DisplayFusion gives users power and precision over their multi-monitor setup, with automation and customization options to create the perfect displays, every time.

To learn more about DisplayFusion, visit: <https://www.displayfusion.com>

# About Binary Fortress Software

Binary Fortress has spent 17 years in pursuit of one goal: create software to make life easier. Our software ranges from display management and system enhancement utilities to monitoring tools and digital signage. IT administrators, professional gamers, coffee-shop owners, and MSPs all rely on Binary Fortress to make their days better, and their lives easier.

Copyright © 2007-2024 Binary Fortress Software, all rights reserved.

The Binary Fortress logo is a trademark of Binary Fortress Software.

The DisplayFusion logo is a trademark of Binary Fortress Software.

Binary Fortress Software  
1000 Innovation Drive, Suite 500  
Kanata, Ontario, Canada  
K2K3E7  
<https://www.binaryfortress.com>