

Window Position Profiles



DISPLAYFUSION



BINARYFORTRESS

Window Position Profiles

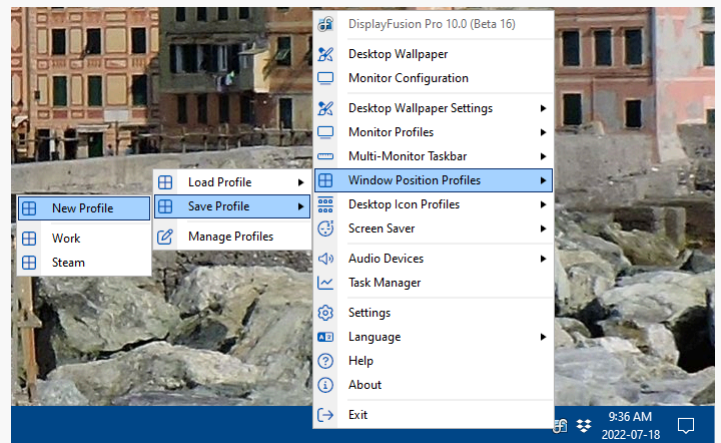
Window Position Profiles allow you to save your current window layout and easily restore it at a later time, (e.g. after reboots, or undocking/redocking). This guide will walk you through multiple methods for saving and loading Window Position Profiles.

Save a New Window Position Profile

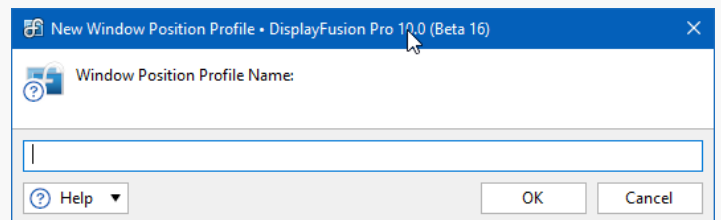
To save a Window Position Profile, begin by arranging application windows across your screens. Size and position them how you like, then perform one of the following methods:

From Tray Icon Menu

Right-click the DisplayFusion tray icon, navigate to "Window Position Profiles," and select "Save Profile," then "New Profile."

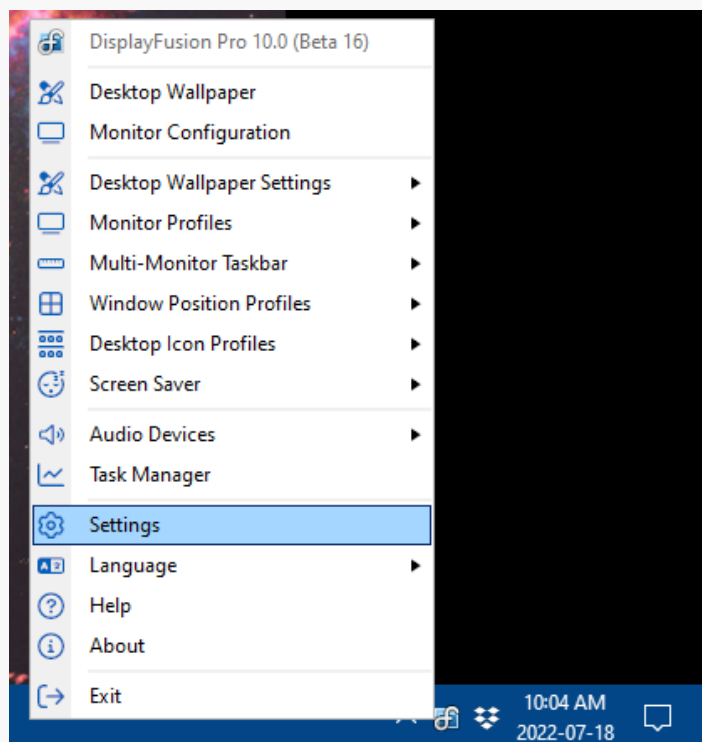


Name your profile and click "OK."

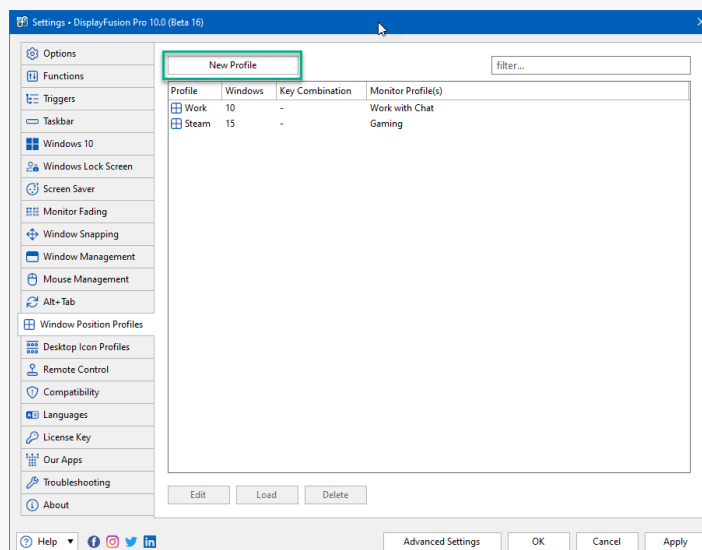


From Window Position Profiles Tab

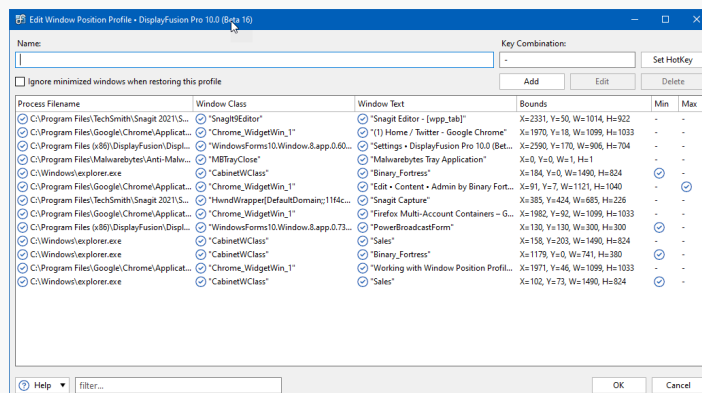
Right-click the DisplayFusion tray icon and select "Settings."



Click the "Window Position Profiles" tab and click "New Profile."



Name your profile and click "OK." (Other options include setting a HotKey, ignoring minimized windows when restoring the profile, and adding/editing/deleting entries in the list of windows.)



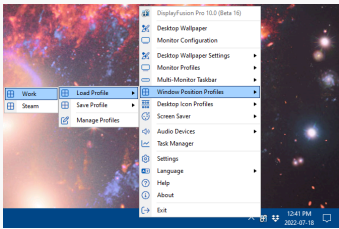
Overwrite an Existing Window Position Profile

Use the same initial navigation paths to save over or edit existing profiles. Note that overwriting does not add programs to the profile, it completely replaces it with only the windows you have open at the time.

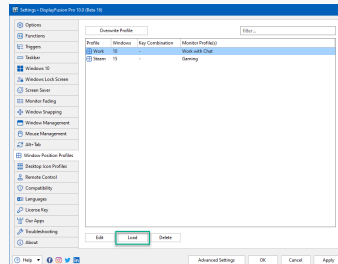
Load a Window Position Profile

Manual Loading Options

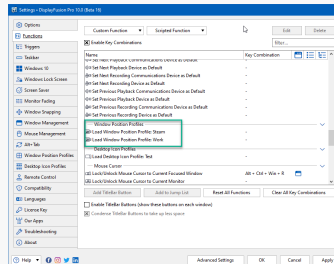
1. Right-click the DisplayFusion tray icon, navigate to "Window Position Profiles," and select "Load Profile," then select a saved profile.
2. Open the DisplayFusion "Settings," select the "Window Position Profiles" tab, select the desired profile from the list, and click the "Load" button.
3. Set a HotKey and/or add a TitleBar Button for the profile and load using either method (See [Functions](#) for more detail).
4. Set a HotKey via the "Window Position Profiles" tab by editing the profile and assigning the key combination, the load using that HotKey.



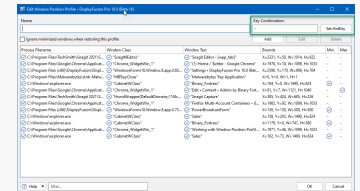
1. Load From Tray Icon



2. Load From WPP Tab



3. Load From Function



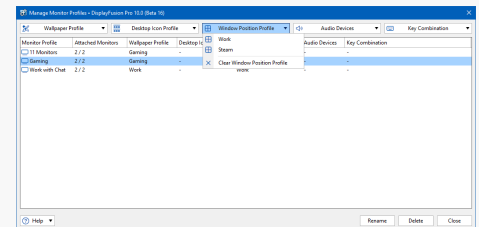
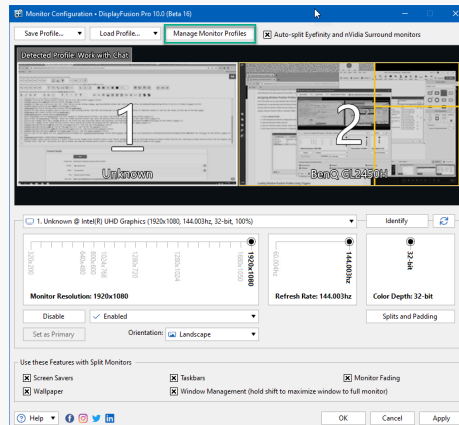
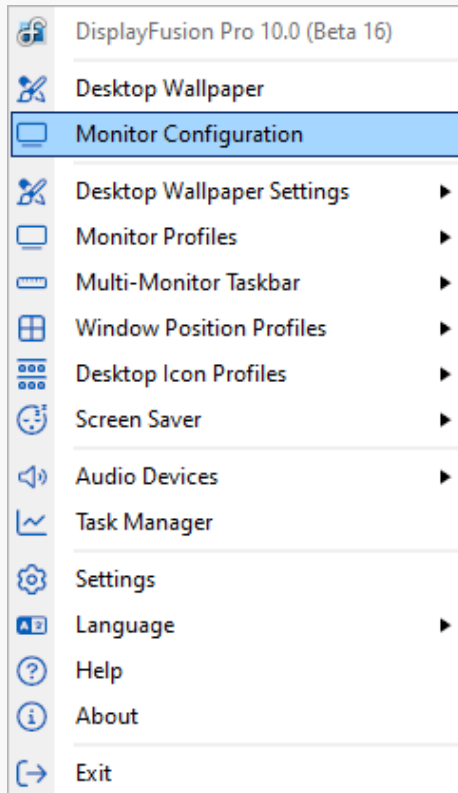
4. Load From HotKey

5. Load via the command line with `DisplayFusionCommand.exe -WindowPositionProfileLoad "profile name"` (See [Command Line Tool](#) for more detail).

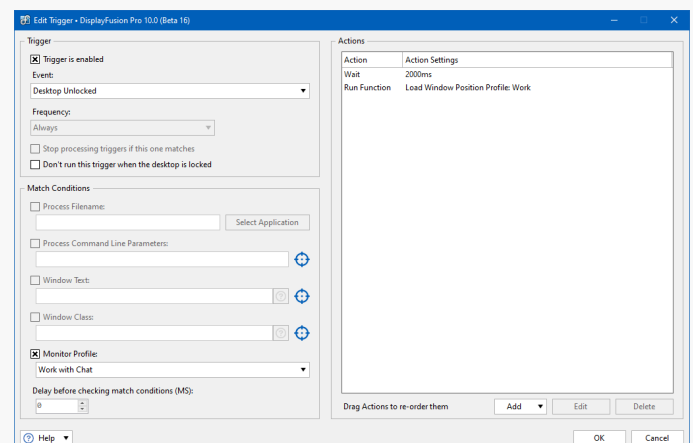
Automatic Loading Options

1. Assign a Window Position Profile to a Monitor Profile via the "Manage Monitor Profiles" button in the "Monitor Configuration" window by selecting/creating the Monitor Profile from the list, selecting the Window Position Profile from the dropdown, and clicking "Close," then "OK."

The profiles will then be linked; each time the selected Monitor Profile is loaded, its Window Position Profile will be loaded as well. Note there is a delay of 15-20 seconds after a Monitor Profile loads before the window positions are loaded.



2. Create a Trigger to load a Window Position Profile when a specific Event is carried out. (See [Triggers](#) for more detail).



Editing a Profile

1. Right-click the DisplayFusion tray icon, choose Settings.
2. Click the Window Position Profiles tab.
3. Select the profile to edit and click the Edit button.
4. In the "Edit Window Position Profile" window, you can click Add to add a new entry, or select an existing entry and click Edit or Delete.

Tips

- If a window has a window title that changes often (e.g. a web browser where the title is the page you're currently on), you can edit the "Window Text" condition for that entry and remove all except the name of the program. Using Google Chrome as an example, you'd remove all but "Google Chrome" from the Window Text condition.
- If two entries have identical "Process Filename," "Window Class," and "Window Text" conditions, both entries will match any window with those values. There isn't anyway around this, as those are the only conditions that can be used to identify an open window.
- Window Position Profiles don't launch the applications, they only move windows that are already open before the profile was loaded. If you'd like to launch and position applications on startup, please see the [**Launching and Positioning an Application on Startup**](#) guide.

About DisplayFusion

DisplayFusion gives users power and precision over their multi-monitor setup, with automation and customization options to create the perfect displays, every time.

To learn more about DisplayFusion, visit: <https://www.displayfusion.com>

About Binary Fortress Software

Binary Fortress has spent 18 years in pursuit of one goal: create software to make life easier. Our software ranges from display management and system enhancement utilities to monitoring tools and digital signage. IT administrators, professional gamers, coffee-shop owners, and MSPs all rely on Binary Fortress to make their days better, and their lives easier.

Copyright © 2007-2025 Binary Fortress Software, all rights reserved.

The Binary Fortress logo is a trademark of Binary Fortress Software.

The DisplayFusion logo is a trademark of Binary Fortress Software.

Binary Fortress Software
1000 Innovation Drive, Suite 500
Kanata, Ontario, Canada
K2K3E7
<https://www.binaryfortress.com>